

Snyderville Basin Recreation District

Road Base Trail Overlay 2023

Quotes must be received by 6/30/2023 at 12:00pm to be considered

The Snyderville Basin Special Recreation District (The District) invites you to respond to this quote request for road base overlay on selected trails in the Park City area.

Please submit a quote to perform the road base trail overlay as described in the Scope of Work below. The District wishes to have this work completed by September 30, 2023. Please submit your bid via email to dave@basinrecreation.org before 12:00 pm on **Friday, June 30, 2023**.

Please provide the following information with your bid:

- **A cost estimate for road base overlay on Wasatch Trail**
 - **Full trail (A), partial trail (B) and/or (C)**
- **Specification sheets on equipment being used and road base product to be applied**
- **List of recent jobs of similar scope and scale with names and contact info**

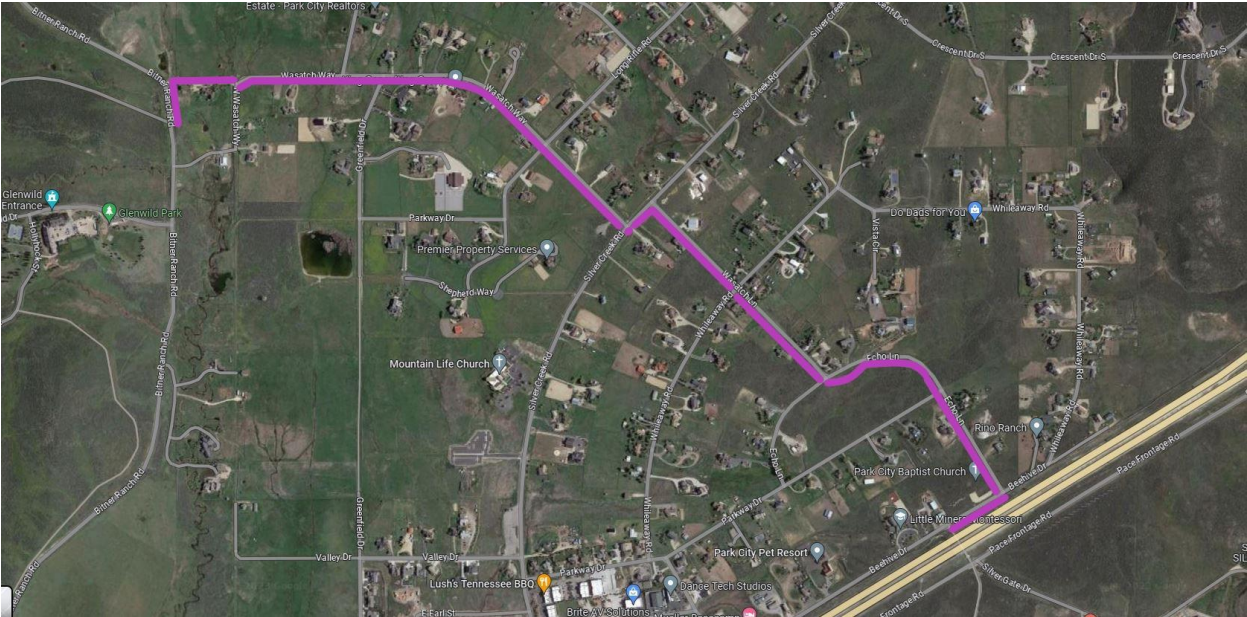
SCOPE OF WORK:

- Import, place and compact a 2-3" lift on existing road base surfaced trails along approximately 8,796 LF (section A), 4,482 LF (section B), or 4,314 LF (section C) on the Wasatch trail (see attached map).
- Specified material: commercial road base from approved location.
- Overlay is to be approximately 8' wide and approximately 3" compacted depth. Edges of the new material are to be raked even and left clean and tidy.
- Surface of the trail is to be slightly crowned to a 2% out slope, graded smooth and even to prevent ponding on trail.
- Material must be moisture conditioned and compacted using a vibratory drum roller with a minimum width of 54".
- All equipment, traffic and disturbance is to be confined to the trail surface, the trail is located within a defined easement and may run through private, public and or protected property. It is important to minimize disturbance outside of the trail corridor.
- Trucks are allowed on the trail but must stay on the trail.
- A system to warn trail users must always be in place, i.e. trail closed/detour signage, barricades directing traffic, etc.

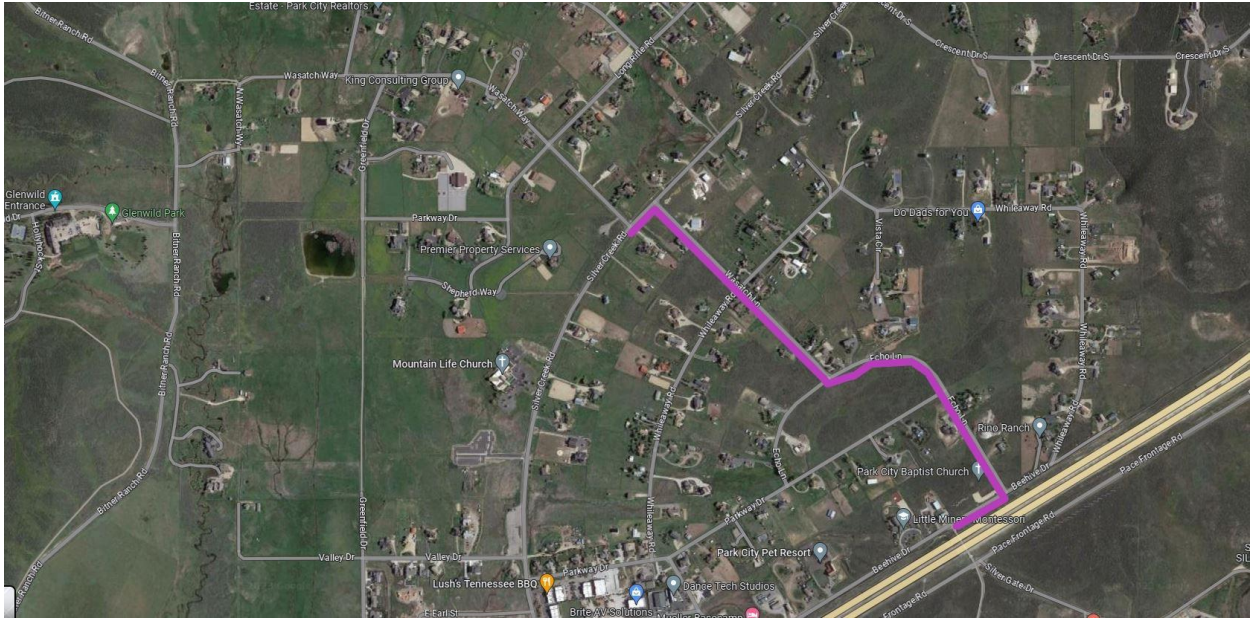
Should quantities and/or pricing listed above change, CONTRACTOR will receive approval from the DISTRICT in writing prior to incurring costs.

<u>Bid Item</u>	<u>Quantity</u>	<u>Unit Price</u>	<u>Total Price</u>
Section A			
Section B			
Section C			
Total			

Section A – full trail – approximately 8,796 LF



Section B – south partial trail – approximately 4,482 LF



Section C – north partial trail – approximately 4,314 LF

